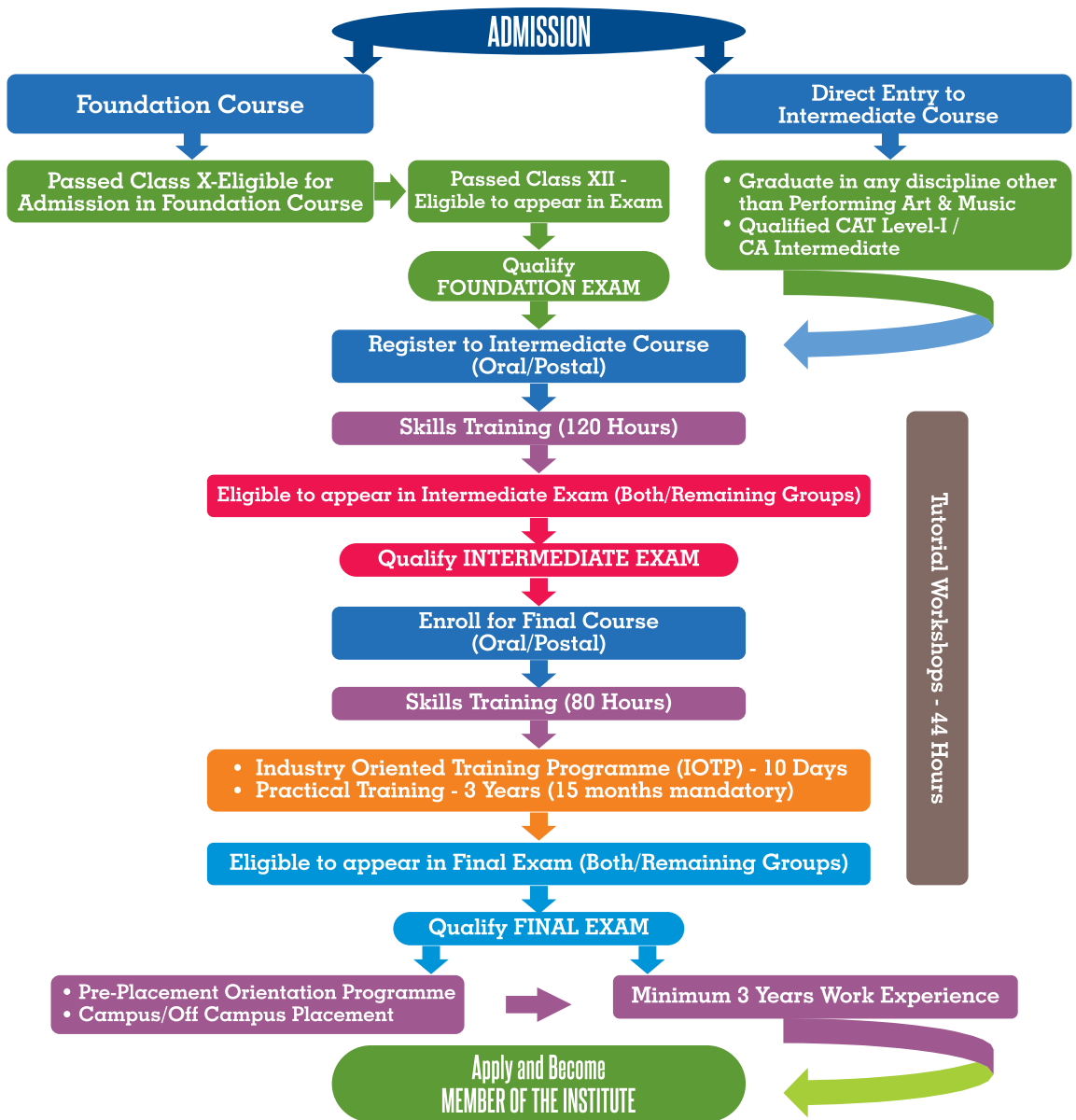


# CMA COURSE FLOW CHART 2025

FROM ADMISSION TO MEMBERSHIP ..... WAY FORWARD



**THE INSTITUTE OF  
COST ACCOUNTANTS OF INDIA**

(Statutory Body under an Act of Parliament)

[www.icmai.in](http://www.icmai.in)

**Headquarters:** CMA Bhawan, 3, Institutional Area, Lodhi Road, New Delhi - 110003

**Kolkata Office:** CMA Bhawan, 12, Sudder Street, Kolkata - 700016



[studies@icmai.in](mailto:studies@icmai.in)



[membership@icmai.in](mailto:membership@icmai.in)

**Admission as a Student**

**Application for Membership**

<https://eicmai.in/studentonlineregsystem/Home.aspx>

<https://eicmai.in/external/ChooseApplicationType.aspx>

Behind Every Successful Business Decision, there is always a **CMA**

